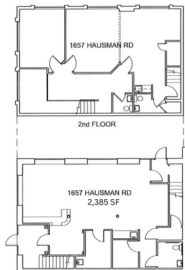


1657 Hausman Rd- Lower Level & Upper Level
2,385 SF - Office Space - \$25/SF NNN

Spacious two-story office layout perfect for professional services, medical, or administrative users.



kw
KELLERWILLIAMS
REAL ESTATE
Each office is individually owned and operated

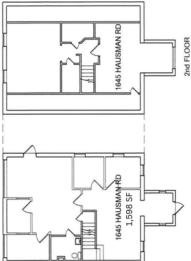
James Balliet
President
O 610-435-1800
C 610-972-6808
James@JBPropertyGroup.com
JBPropertyGroup.com

 **James Balliet**
PROPERTY GROUP

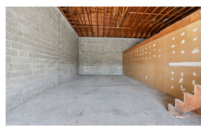
Michael G. Makhoul
Realtor
O 610-435-1800
C 610-390-3839
Mike@JBPropertyGroup.com
JBPropertyGroup.com

1645 Hausman Rd - 1,598 SF
 Office/Retail Space - \$22/SF NNN
 Current Build-Out - Veterinary Office

Flexible layout well-suited for medical, wellness, retail, or service-oriented businesses.



1653 Hausman Rd
 742 SF - Garage Space - \$16/SF NNN



Ideal for contractors, storage, light service operations, or specialty users seeking functional workspace.



James Balliet
 President
 O 610-435-1800
 C 610-972-6808



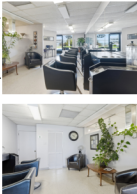
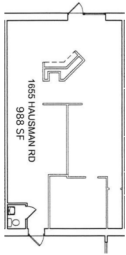
James@JBPropertyGroup.com
 JBPropertyGroup.com

Michael G. Makhoul
 Realtor
 O 610-435-1800
 C 610-390-3839

Mike@JBPropertyGroup.com
 JBPropertyGroup.com

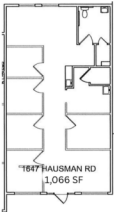
1655 Hausman Rd
 988 SF - Retail Space - \$28/SF NNN
 Current Build-Out - Hair Salon

Turn-key salon or boutique retail opportunity with strong storefront visibility.



1647 Hausman Rd- 1,066 SF
 Office/Retail Space - \$22/SF NNN
 Current Build-Out - Medical Office

High-visibility retail storefront ideal for boutique retail, food concepts, or service providers.



Hausman Plaza

Retail/Office/Garage

Space Available

