

**2092 STEFKO BLVD
BETHLEHEM, PA 18017**

**FOR
SALE**



3,355 SF OFFICE BUILDING

Fabulous freestanding building available on Stefko Blvd. in Bethlehem, PA. Very flexible zoning allows for a multitude of uses including medical and veterinary. Property is zoned for office/ medical and so much more. Former Tenant was Malvern Treatment Centers. 3,355 SF total space available.

Please call to schedule showing today.

- .58 Acres in Bethlehem City
- Zoned CL- Limited Commercial
- Atrium & Reception Area with Yard
- Great Signage

kw
KELLERWILLIAMS
REAL ESTATE
Each office is individually owned and operated

 **James Balliet**
PROPERTY GROUP

James Balliet
President
O 610-435-1800
C 610-972-6808
James@JBPropertyGroup.com
JBPropertyGroup.com

ATRIUM WITH RECEPTION AREA



kw

KELLERWILLIAMS.
REAL ESTATE

Each office is individually owned and operated

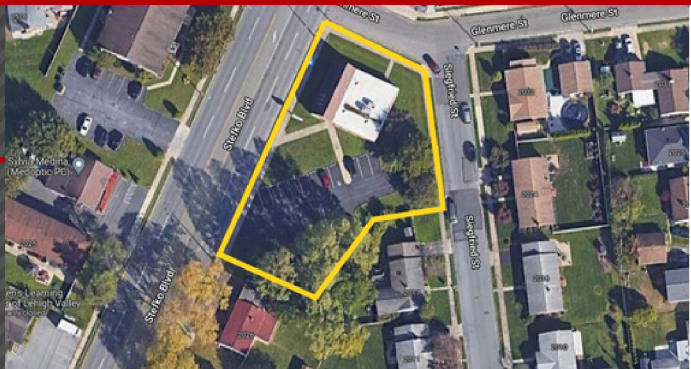
 **James Balliet**
PROPERTY GROUP

James Balliet
President
O 610-435-1800
C 610-972-6808
James@JBPropertyGroup.com
JBPropertyGroup.com

LOCATED ON HEAVILY TRAVELED STEFKO BLVD



AMPLE DEDICATED PARKING - 20+ SPACES



kw
KELLERWILLIAMS.
REAL ESTATE
Each office is individually owned and operated

James Balliet
PROPERTY GROUP

James Balliet
President
O 610-435-1800
C 610-972-6808
James@JBPropertyGroup.com
JBPropertyGroup.com