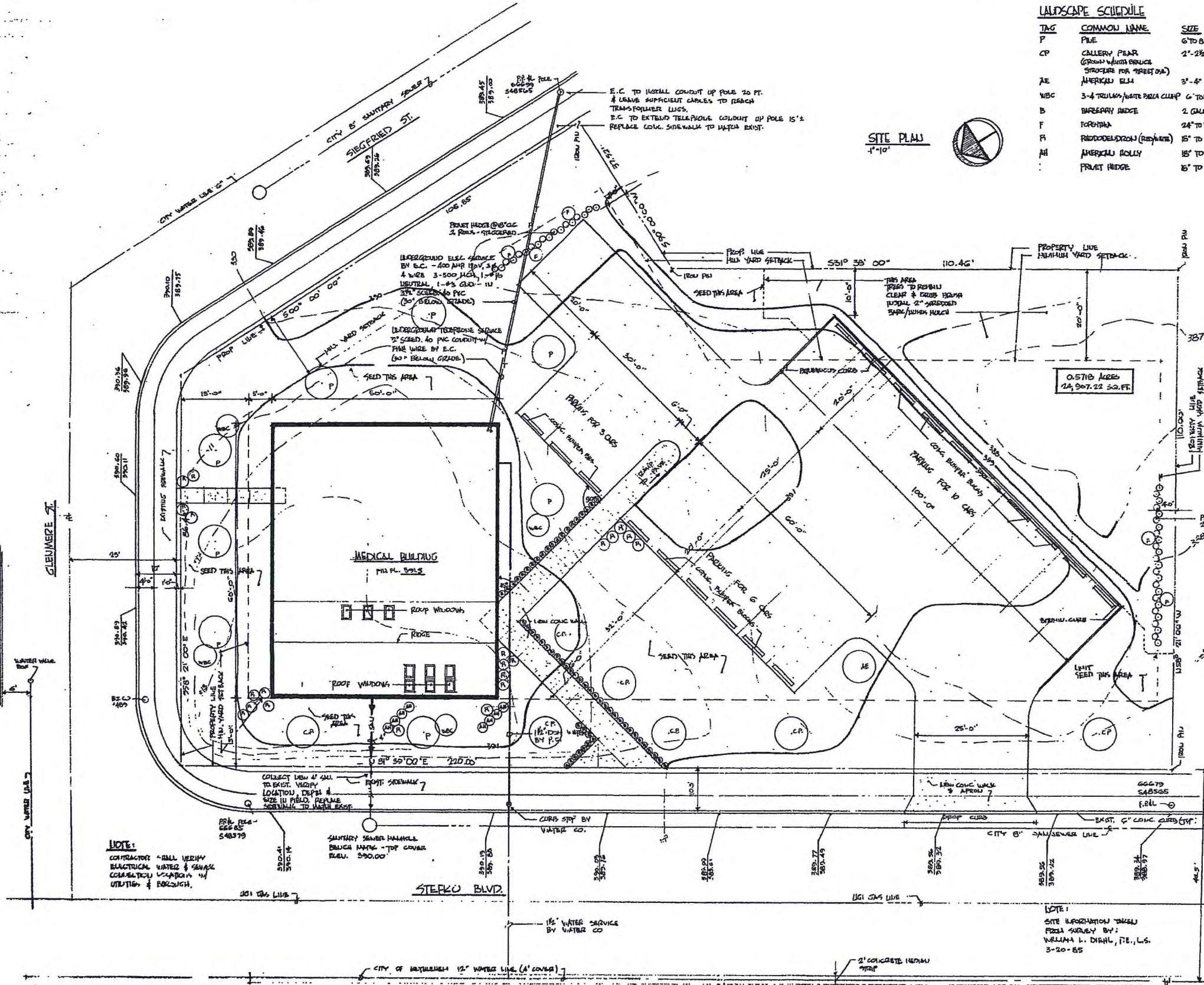


Grade & Elevation



**LANDSCAPE SCHEDULE**

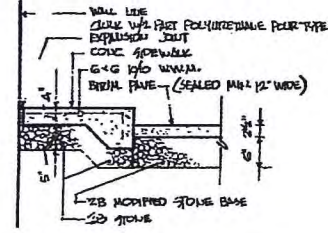
TAG	COMMON NAME	SIZE	QUANTITY
P	PLUM	6" TO 8" HIGH	8
CP	CALLERY PEAR (GROWN WITH BRUCE STRUCTURE FOR STREET USE)	2'-2 1/2" CALIPER	7
AE	AMERICAN ELM	3'-4" CALIPER	1
WBC	3-4 TRELLIS/WHITE PINK CLIMB	6" TO 8" HIGH	3
B	BAREBAY HEDGE	2 GALLONS @ 6" C.C.	60
F	FORSYTHIA	24" TO 36" HIGH	5
FI	RIBBON OLEANDER (RED/WHITE)	18" TO 36" HIGH	21
AH	AMERICAN HOLLY	18" TO 24" HIGH	6
PH	PRIVET HEDGE	18" TO 24" HIGH	90

**SITE PLAN**  
1" = 10'

**INDEX OF DRAWINGS**

- SP-1 SITE PLAN
- G-1 FLOOR PLAN/SCHEDULES
- G-2 ELEVATIONS/DETAILS
- G-3 ELEVATIONS/WINDOW DETAILS
- G-4 CROSS SECTION/DETAILS
- G-5 FOUNDATION PLAN/DETAILS
- G-6 ROOF FRAMING PLAN
- HA-1 MECHANICAL
- PA-1 PLUMBING
- E-1 ELECTRICAL POWER PLAN
- E-2 ELECTRICAL LIGHTING PLAN

**PLAN APPROVAL**  
Commonwealth of Pennsylvania  
Department of Labor & Industry  
These plans have been reviewed and approved in accordance with the Fire and Public Law, Act No. 228, P.S. 5326-228. The Regulations governing the construction of buildings are hereby approved. The contractor shall be responsible for all conditions shown on these plans which are regulated by the Fire and Public Law. Any changes or alterations to these plans which would affect any provisions of the Fire and Public Law must be approved by the Department.



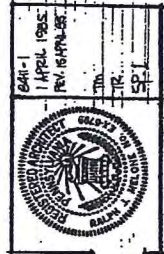
**TOP SIDEWALK/PAVEMENT DETAIL**  
1/4" = 1'-0"

Block 80271  
File No. 4-24-85  
W D-D  
TOC Dec. Clk. 4f County Code  
EIA FAA Act 212 - Envtl YC  
DEF SPB Act 213-216 - Hghw  
Plan Examiner 85-03150  
Draw. Index No.  
Block 140.00  
647.27 10.00  
150.00

**NOTE:**  
CONTRACTOR SHALL VERIFY ELECTRICAL WATERS & SEWER CONNECTIONS LOCATION & DEPTH SIDE IN FIELD. REPAIRS NECESSARY TO MATCH EXIST.

**NOTE:**  
SITE INFORMATION TAKEN FROM SURVEY BY WILLIAM L. DIBAL, P.E., L.S. 3-20-85

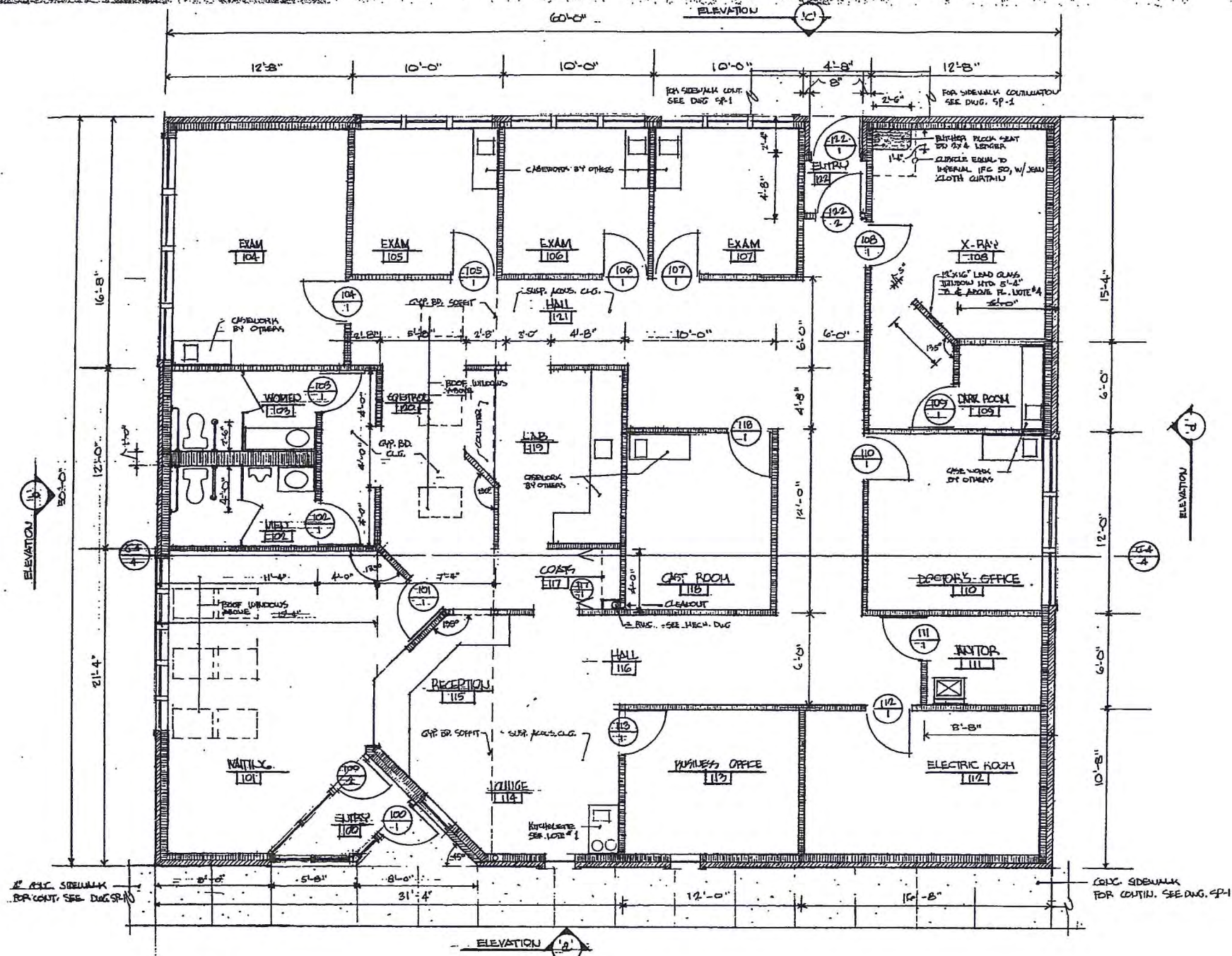
ALL DIMENSIONS & EXISTING CONDITIONS SHALL BE CHECKED & VERIFIED BY THE CONTRACTOR AT THE SITE.



RALPH J. MELOLE, P.E.

STEREO MEDICAL, INC., 775 STEPHO BOULEVARD & CLEMMERE STREET, BETHLEHEM, PA.





FLOOR PLAN  
1/4" = 1'-0"

NOTES:

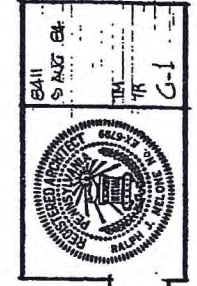
1. KITCHENETTE SHALL BE DIMER, #E39 SB, FURNISHED & INSTALLED BY G.C.
2. RADIATION SHIELDING FOR WALLS SHALL BE EQUAL TO MERRAY 8MM LEAD INSULATED WALL BOARD. INSTALL IN STRICT ACCORD WITH MANUFACTURER'S WRITTEN INSTRUCTIONS INCLUDING SCRUB SPACING, LEAD STRIP AT EACH STUD, 1/2" DIAMETER LEAD PLUG AT SCREWS. GYP. WALLBOARD SHALL BE 8'-0" HIGH. LEAD INSULATION SHALL BE 7'-0" HIGH.
3. DOOR 106-1 SHALL BE FLUSH LEAD LINED WHITE OAK VENEER EQUAL TO MERRAY TYPE 1/2" W/LEAD LINED DOOR FRAME & LIGHT PROOF SEALS. CO-ORDINATE HARDWARE INCLUDING LOCKSET W/DOOR HEIGHT.
4. CONTROL WINDOW SHALL BE EQUAL TO MERRAY LEAD GLASS WINDOW IN 1/4" OAK ALUM. FRAME FLAYED & W/LEAD LINING.
5. ALL RADIATION SHIELDING SHALL BE VERIFIED BY A CERTIFIED RADIOLOGICAL PHYSICIST PRIOR TO ORDERING THE MATERIAL. VERIFICATION SHALL BE BY OWNER & IS NOT A PART OF THIS CONTRACT.
6. BRICK ALLOWANCE SHALL BE \$275 PER THOUSAND FOR BRICKS ONLY (SIZED INCLUDING DELIVERY & TAXES. LABOR (HORIZONTAL INSTALLATION), ETC. ARE TO BE INCLUDED IN CONTRACTOR'S BID.
7. CARPET ALLOWANCE SHALL BE \$16 PER SQUARE YARD FOR CARPET ONLY. MERRAY DELIVERY & TAXES CARPET SHALL BE LITE BACKED. DIRECT GUE (SUN) INSTALLATION, ADHESIVES, TRIMMERS ETC. SHALL BE INCLUDED IN CONTRACTOR'S BID.
8. WALL VINYL ALLOWANCE SHALL BE \$1.00 PER SQUARE FOOT FOR VINYL ONLY, INCLUDING DELIVERY & TAXES. INSTALLATION, ADHESIVES, ETC. SHALL BE INCLUDED IN CONTRACTOR'S BID.

LEGEND

- BOTTING CONTOUR
- NEW CONTOUR
- WOOD STUD WALL
- BRICK
- BLOCK
- ROOM NUMBER
- ELEVATION
- ENTRANCE
- DOOR NUMBER
- SHEET NUMBER
- METAL NUMBER

NUMBER	SPACE	FLOOR FINISH SCHEDULE			DOOR SCHEDULE			SCHEDULE									
		FLOOR	BASE	WALL	CEILING	REMARKS	TYPE	WIDTH	HEIGHT	SIZE	MATERIAL	HT.	TYPE	HARDWARE	REMARKS		
100	ENTRY	SHEET VINYL	VINYL	GYP. BD. VINYL	BR. BR. LINOLEUM												
101	WAITING	CARPET	VINYL	GYP. BD. VINYL	GYP. BD. PTD.												
102	VESTIB.	SHEET VINYL	VINYL	GYP. BD. VINYL	5/8" ACOS.												
103	W.C.	SHEET VINYL	VINYL	GYP. BD. VINYL	5/8" ACOS.												
104	W.C.	SHEET VINYL	VINYL	GYP. BD. VINYL	5/8" ACOS.												
105	W.C.	SHEET VINYL	VINYL	GYP. BD. VINYL	5/8" ACOS.												
106	X-RAY	CARPET	VINYL	GYP. BD. VINYL	5/8" ACOS.												
107	LAB	CARPET	VINYL	GYP. BD. VINYL	5/8" ACOS.												
108	CONTROL ROOM	CARPET	VINYL	GYP. BD. VINYL	5/8" ACOS.												
109	LAB	CARPET	VINYL	GYP. BD. VINYL	5/8" ACOS.												
110	DOCTOR'S OFFICE	CARPET	VINYL	GYP. BD. VINYL	5/8" ACOS.												
111	WAITING	CARPET	VINYL	GYP. BD. VINYL	5/8" ACOS.												
112	ELECTRIC ROOM	CARPET	VINYL	GYP. BD. VINYL	5/8" ACOS.												
113	BUSINESS OFFICE	CARPET	VINYL	GYP. BD. VINYL	5/8" ACOS.												
114	RECEPTION	CARPET	VINYL	GYP. BD. VINYL	5/8" ACOS.												
115	HALL	CARPET	VINYL	GYP. BD. VINYL	5/8" ACOS.												
116	LAB	CARPET	VINYL	GYP. BD. VINYL	5/8" ACOS.												
117	LAB	CARPET	VINYL	GYP. BD. VINYL	5/8" ACOS.												
118	LAB	CARPET	VINYL	GYP. BD. VINYL	5/8" ACOS.												
119	LAB	CARPET	VINYL	GYP. BD. VINYL	5/8" ACOS.												
120	CONTROL ROOM	CARPET	VINYL	GYP. BD. VINYL	5/8" ACOS.												
121	HALL	CARPET	VINYL	GYP. BD. VINYL	5/8" ACOS.												
122	ENTRY	CARPET	VINYL	GYP. BD. VINYL	5/8" ACOS.												

ALL DIMENSIONS & FASTING CONDITIONS SHALL BE CHECKED & VERIFIED BY THE CONTRACTOR AT THE SITE.



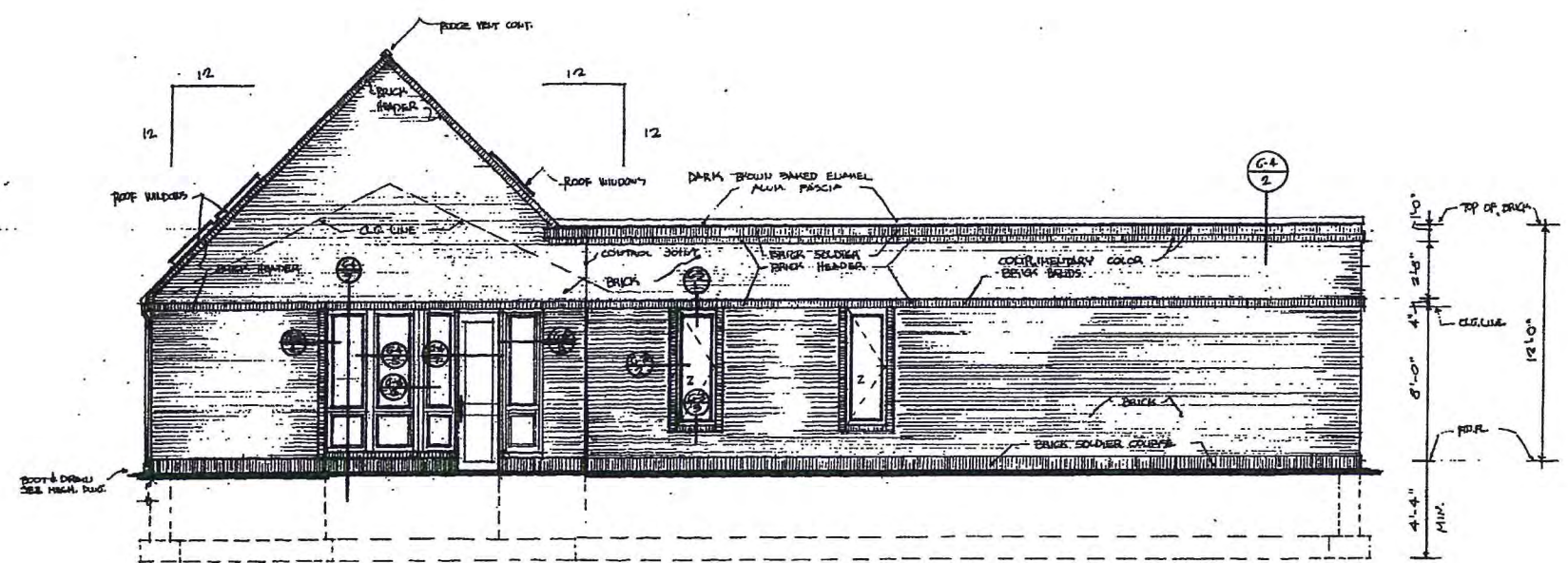
RALPH J. MELOCHE, A.I.A.

MEDICENTER, INC.

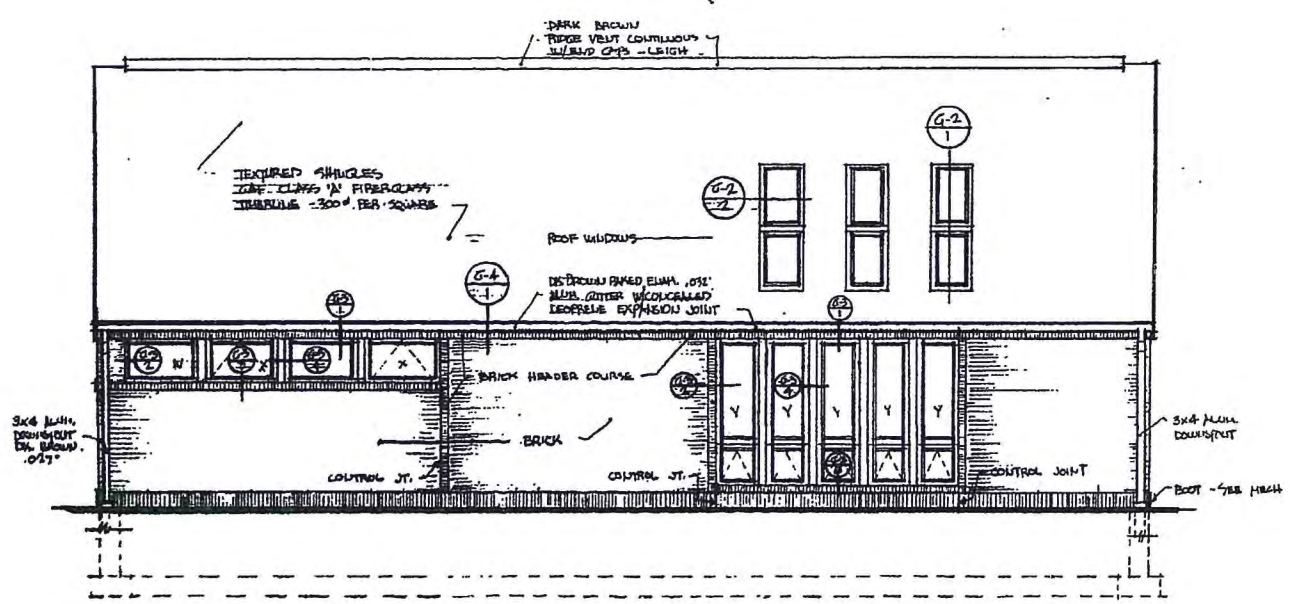


RALPH J. HELOUE, A.I.A.

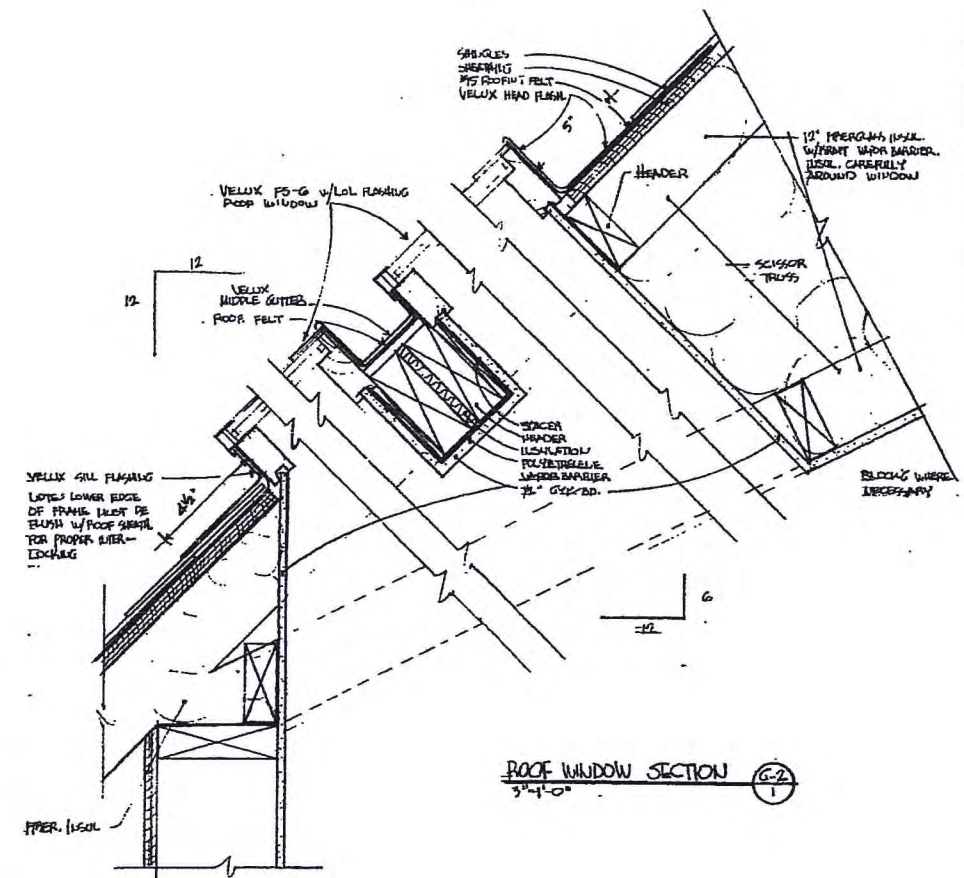
HELOCORP, INC.



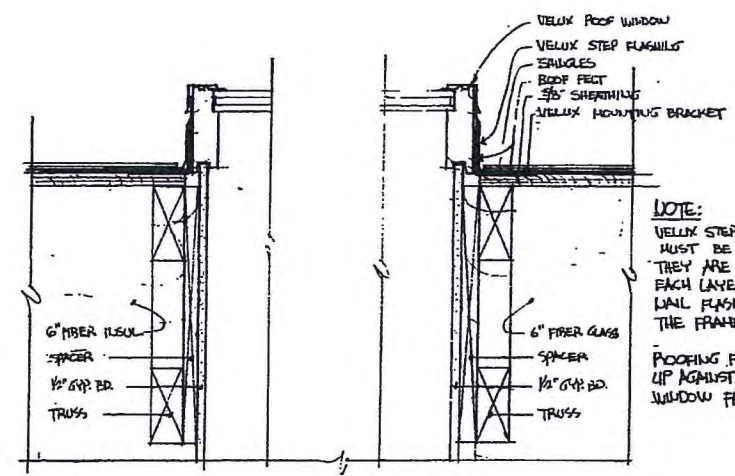
ELEVATION 'A'  
 1/2" = 1'-0"



ELEVATION 'B'  
 1/2" = 1'-0"



ROOF WINDOW SECTION  
 3/4" = 1'-0" (G-2)



ROOF WINDOW DETAIL  
 3/4" = 1'-0" (G-2)

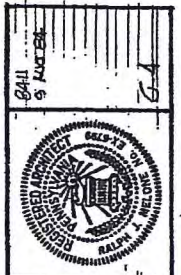
NOTE:  
 VELUX STEP FLASHING PIECES MUST BE PLACED SO THAT THEY ARE INTERLOCKED IN EACH LAYER OF SHINGLES. NAIL FLASHING PIECES TO THE FRAME - NOT THE ROOF.  
 ROOFING FELT TO BE FOLDED UP AGAINST ALL SIDES OF WINDOW FRAME.

ALL DIMENSIONS & EXISTING CONDITIONS SHALL BE CHECKED & VERIFIED BY THE CONTRACTOR AT THE SITE.

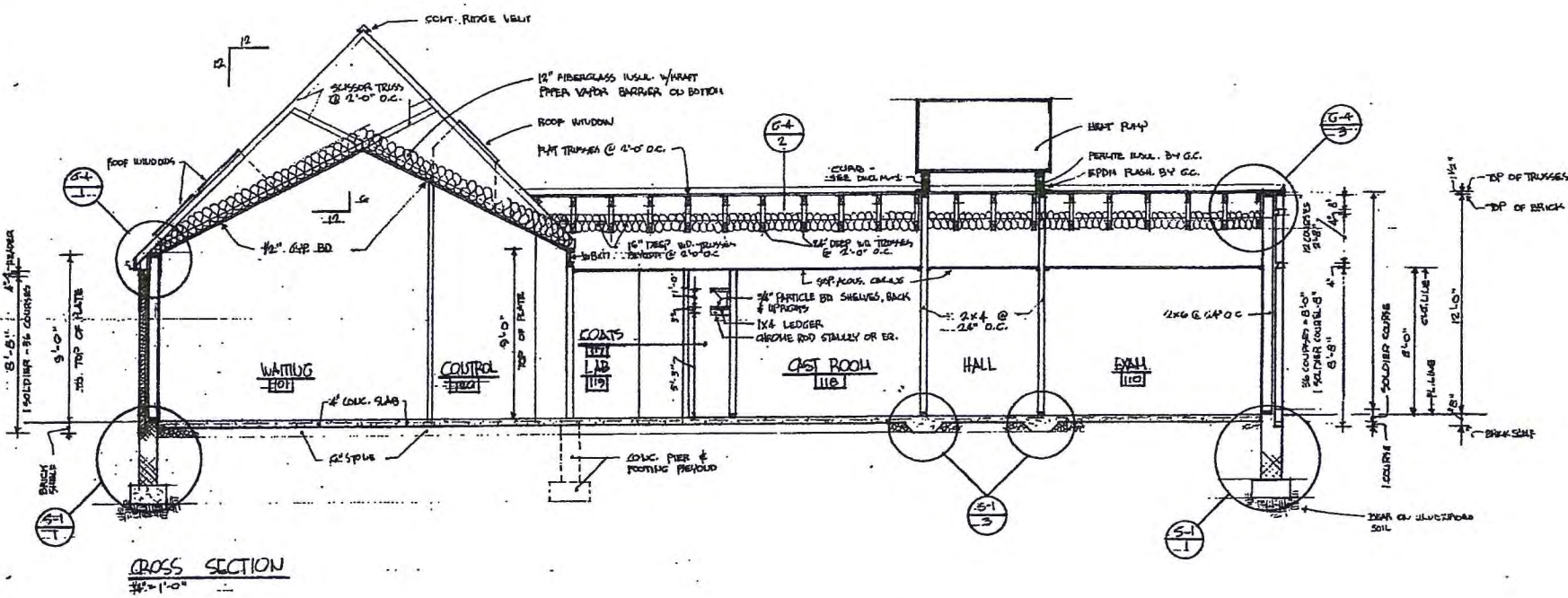




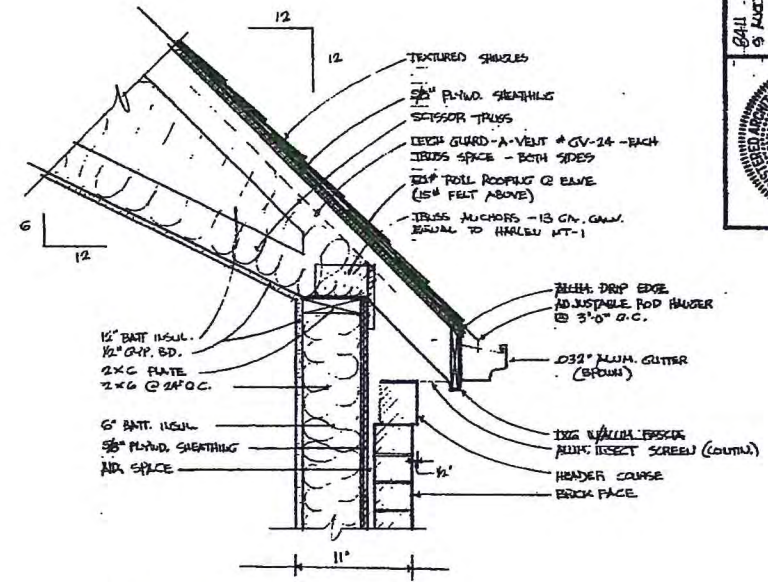




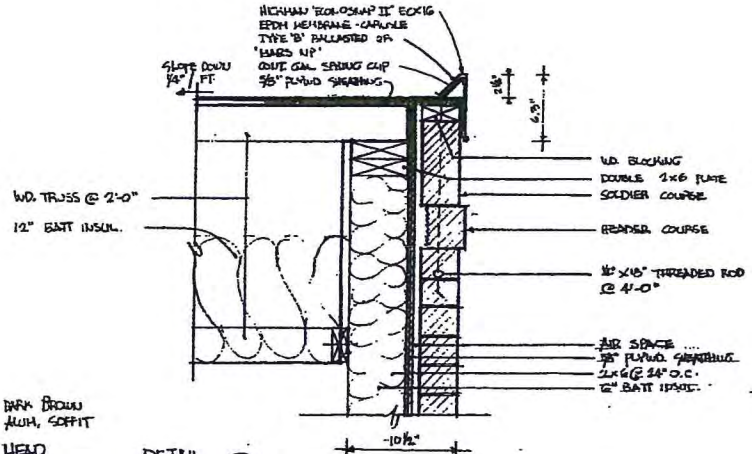
RALPH J. MELOUNE, A.I.A.



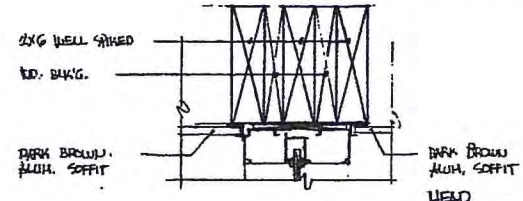
CROSS SECTION  
#1-1'-0"



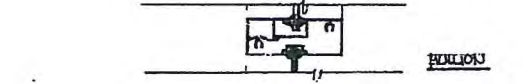
DETAIL G-1  
1/2" x 4'-0"



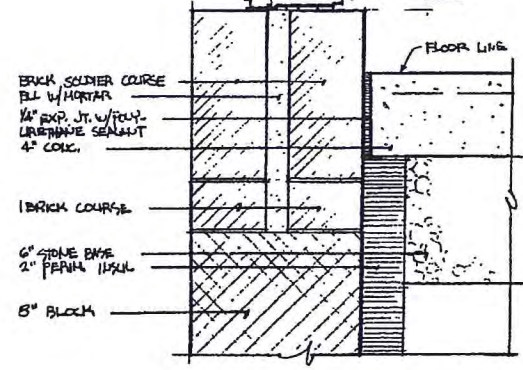
DETAIL G-2  
1/2" x 4'-0"



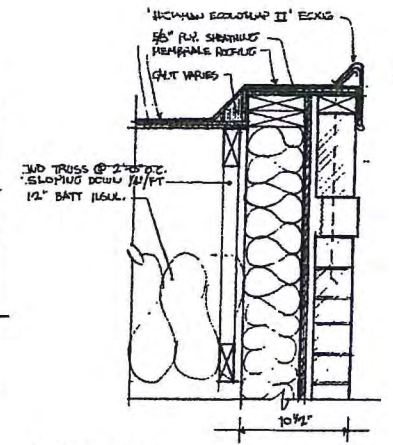
DETAIL G-3  
1/2" x 4'-0"



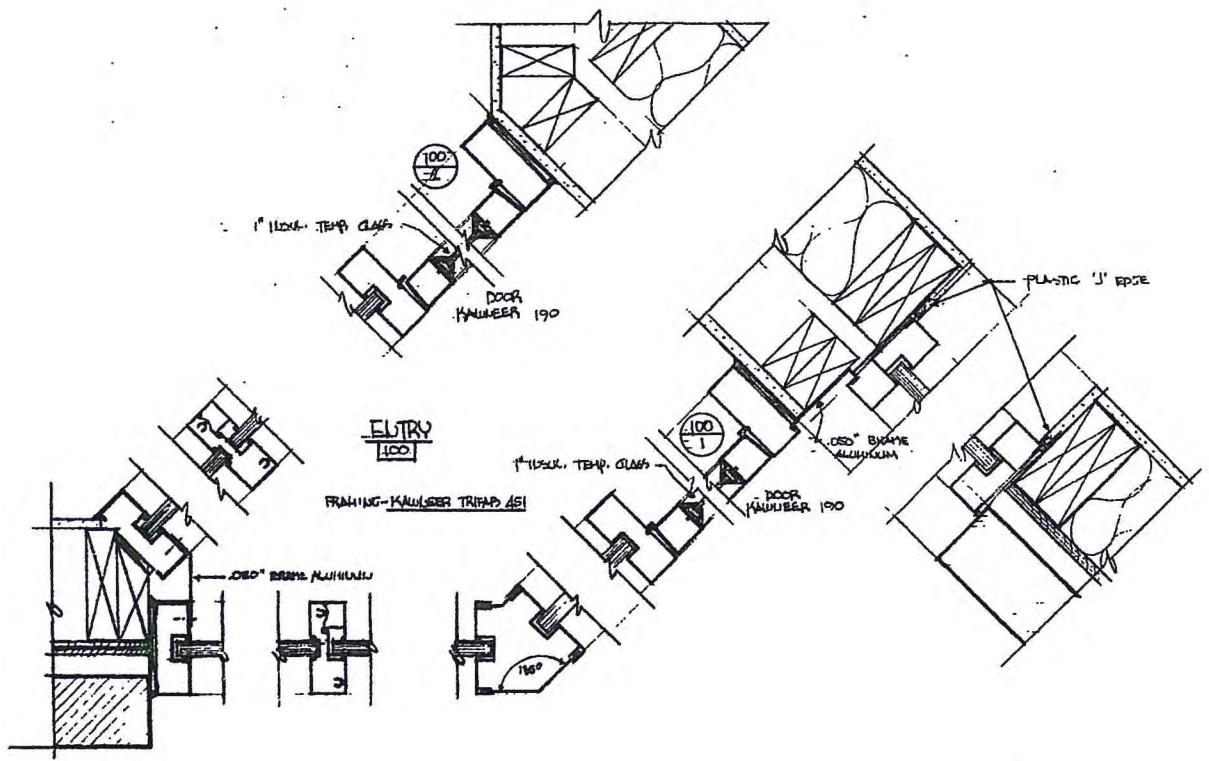
DETAIL G-4  
1/2" x 4'-0"



DETAIL G-5  
3/4" x 1'-0"



DETAIL G-6  
1/2" x 4'-0"



DETAIL G-4  
1/2" x 4'-0"

DETAIL G-5  
3/4" x 1'-0"

DETAIL G-6  
1/2" x 4'-0"

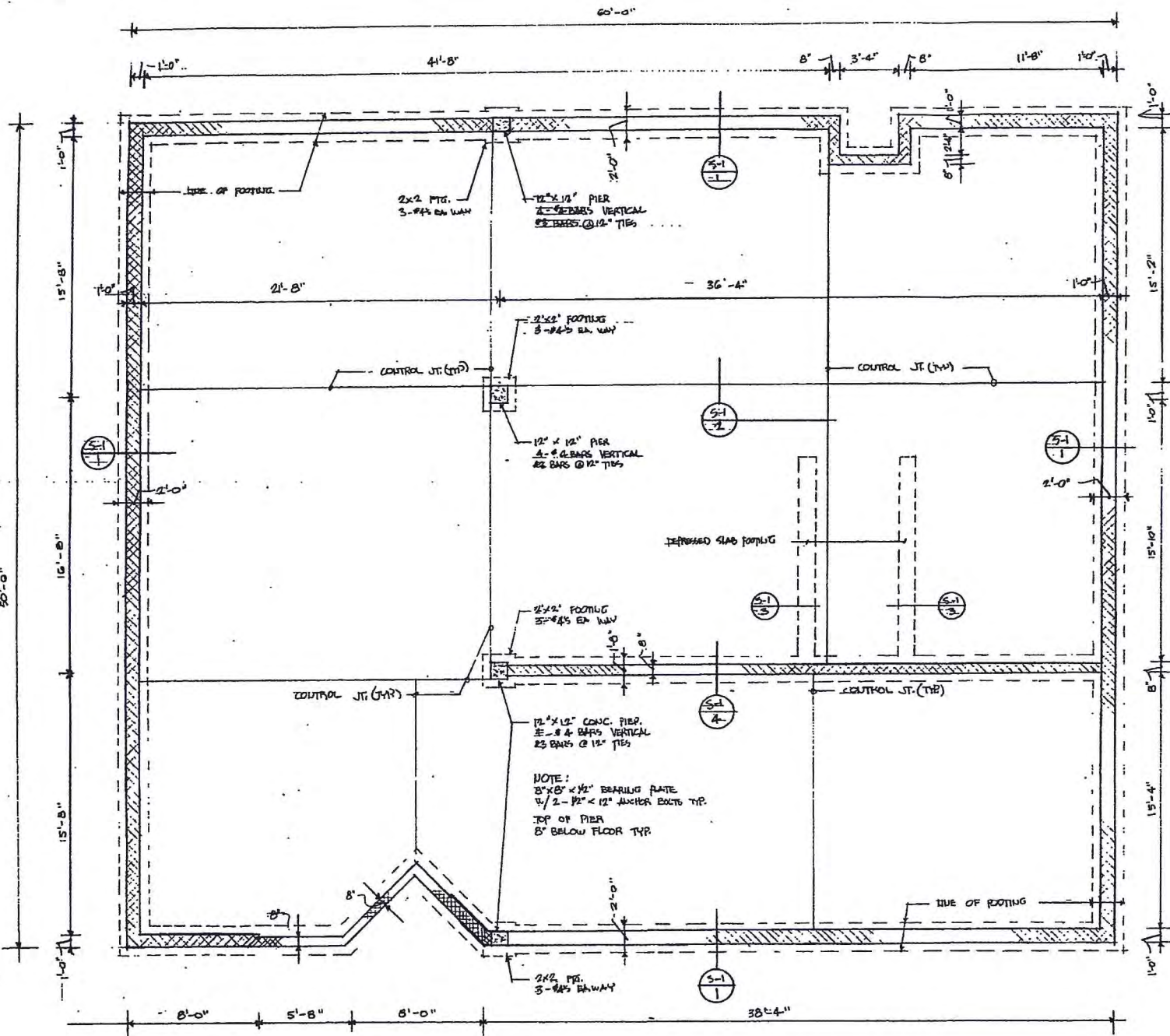
DETAIL G-7  
1/2" x 4'-0"

DETAIL G-8  
1/2" x 4'-0"

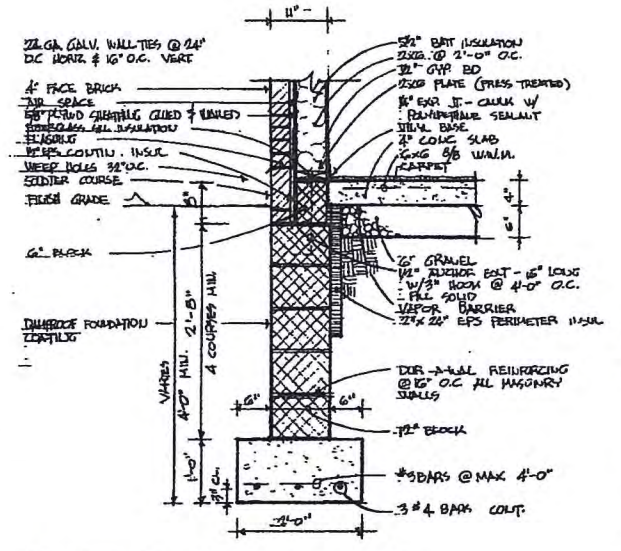
ALL DIMENSIONS & EXISTING CONDITIONS SHALL BE CHECKED & VERIFIED BY THE CONTRACTOR AT THE SITE.

MELONIER, INC.

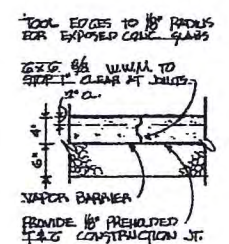




FOUNDATION PLAN  
1/4" = 1'-0"

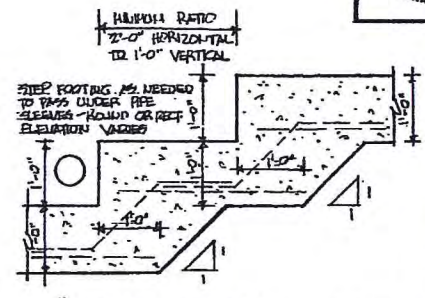


TYP. DETAIL AT EXTERIOR WALLS  
1/4" = 1'-0"

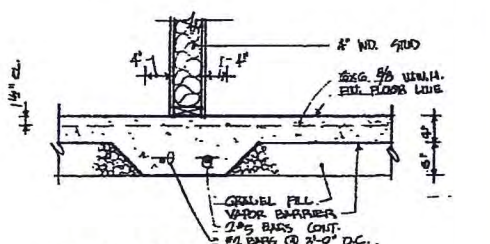


TYP. CONTROL JOINT BETWEEN FLOORS  
1/4" = 1'-0"

TYP. FLOOR CONSTN. @ CONTROL JTS.  
1/4" = 1'-0"

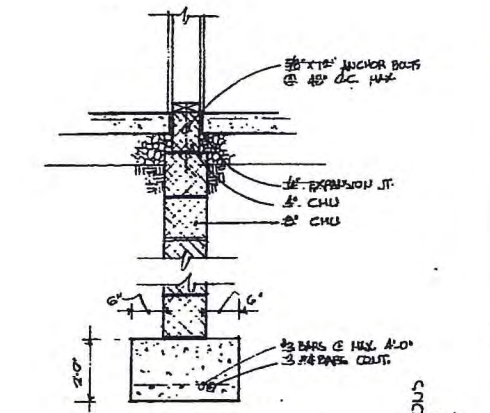


TYP. STEPPED FOOTING  
1/4" = 1'-0"



TYP. DEPRESSED SLAB FOOTING AT INTERIOR PARTITIONS  
1/4" = 1'-0"

DETAIL AT  
1/4" = 1'-0"



TYP. INTERIOR BEARING WALL  
1/4" = 1'-0"

DETAIL AT  
1/4" = 1'-0"

ALL DIMENSIONS & FOOTING CONDITIONS SHALL BE CHECKED & VERIFIED BY THE CONTRACTOR AT THE SITE.



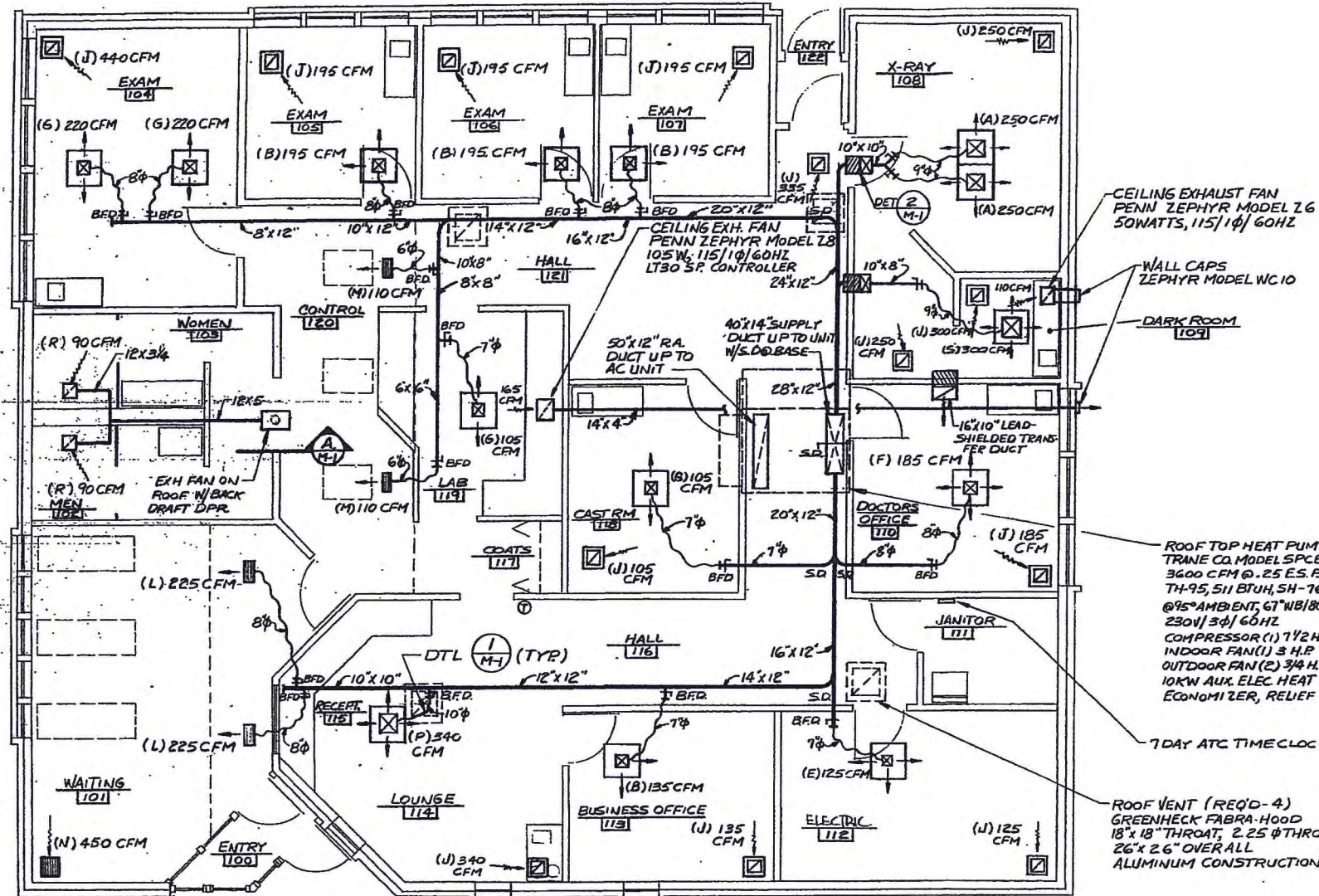
RALPH J. MELONE, A.I.A.

MEDICENTER, INC.









**HVAC SPECIFICATIONS:**

**DUCTWORK-RIGID:** GALVANIZED SHEET METAL. FABRICATE AND INSTALL PER SMACNA STANDARDS. SEAL ALL JOINTS WITH DUCT SEALANT COMPOUND.

**DUCTWORK-DIFFUSER RUNOUTS:** FLEXIBLE INSULATED DUCTS WITH 1-1/2" THICK INSULATION.

**GRILLES AND REGISTERS:** PROVIDE AS NOTED. COMPLETE WITH BACK DRAFT DAMPERS. WIRING BY ELECTRICAL CONTRACTOR.

**EXHAUST FANS:** PROVIDE AS NOTED. COMPLETE WITH INSULATED CURB AND FLASHING AS REQUIRED.

**ROOF VENTILATORS:** PROVIDE 7 DAY PROGRAM TIMECLOCK. THERMOSTAT - TWO STAGE COOLING, TWO STAGE HEATING, WITH DEAD BAND.

**AUTOMATIC TEMPERATURE CONTROLS:** FAN RUNS CONTINUOUSLY. FIRST STAGE COOLING OPERATES ECONOMIZER, SECOND STAGE OPERATES COMPRESSOR.

**OCCUPIED CYCLE:** HEATING: FIRST STAGE OPERATES HEAT PUMP, SECOND STAGE OPERATES ELECTRIC COIL. ELECTRIC RESISTANCE PERIMETER HEAT OPERATES ON INTEGRAL THERMOSTATS.

**UNOCCUPIED CYCLE:** UNIT SHUTS DOWN, PERIMETER ELECTRIC HEAT IS DE-ENERGIZED, COOLING DE-ENERGIZED, AND OUTSIDE AIR DAMPER CLOSES TIGHTLY. WHEN TEMPERATURE FALLS TO HEATING SETTING, HEAT PUMP AND FAN ARE CYCLED TO MAINTAIN TEMPERATURE.

**WIRING:** ALL CONTROL WIRING BY MECHANICAL CONTRACTOR. POWER WIRING BY ELECTRICAL CONTRACTOR.

**AC SYSTEM NOTES:**

1. PROVIDE FULL SIZE CURB FOR ROOFTOP AC UNIT. SHIM AS REQ'D TO LEVEL.
2. ROOFING CONTRACTOR WILL INSULATE & FLASH CURB.
3. CUT ROOF OPENINGS FOR SUPPLY & RETURN DUCTS ONLY.
4. TRUNK DUCTS SHALL BE INSTALLED TIGHT TO UNDERSIDE OF ROOF TRUSSES.

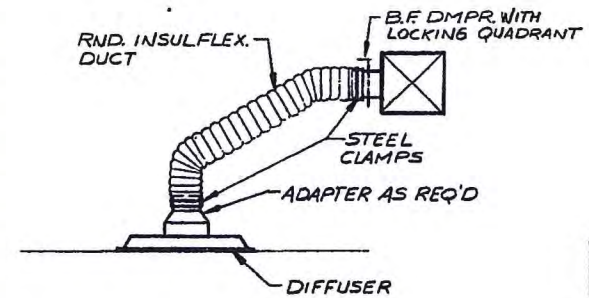
ROOF TOP HEAT PUMP  
TRANE CO. MODEL SPCB 875  
3600 CFM @ .25 ES.P  
TH-95, 511 BTUH, SH-76376 BTUH  
@ 95% AMBIENT, 67" WB/80" DB ENT. INDOOR COIL  
230V/3Ø/60HZ  
COMPRESSOR (1) 1 1/2 HP  
INDOOR FAN (1) 3 H.P.  
OUTDOOR FAN (2) 3/4 H.P.  
10KW AUX. ELEC. HEAT (1 STAGE)  
ECONOMIZER, RELIEF

ROOF VENT (REQ'D-4)  
GREENHECK FABRA-HOOD  
18" X 18" THROAT, 2.25 Ø THROAT AREA  
26" X 26" OVER ALL  
ALUMINUM CONSTRUCTION, BIRDSCREEN

**FLOOR PLAN**

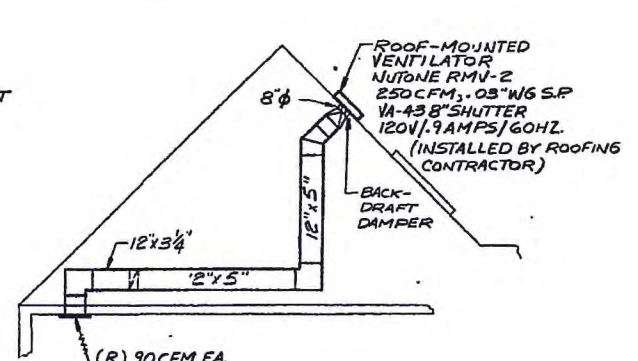
SCALE: 1/4"=1'-0"

SYMBOL	MANUF.	SERVICE	MODEL	SIZE	PATTERN	MODULE	REMARKS/ACCESSORIES
A	AGATAIR	SUPPLY		12x12"	3-WAY	FACELAYIN	FINISH: B.E.Q.W.
B	"	"		8x8"	2-WAY CORNER	"	"
C	"	"		6x6"	"	SURFACE	"
D	"	"		8x8"	4-WAY	FACELAYIN	"
E	"	"		8x8"	3-WAY	"	"
F	"	"		9x9"	4-WAY	"	"
G	"	"		8x8"	2-WAY OPP	"	"
H	"	"		8x8"	"	SURFACE	"
I	"	RETURN		10x10"	GRILLE	"	"
J	"	"		10x10"	"	FACELAYIN	"
K	"	SUPPLY		15x8"	REGISTER	FLUSH MTD (DBL DEFLECT)	"
L	"	"		15x6"	"	"	"
M	"	RETURN		15x8"	GRILLE	FLUSH MTD (DBL DEFLECT)	"
N	"	SUPPLY		15x8"	REGISTER	FLUSH MTD (DBL DEFLECT)	"
O	"	RETURN		15x8"	GRILLE	FLUSH MTD (DBL DEFLECT)	"
P	"	SUPPLY		15x8"	REGISTER	FLUSH MTD (DBL DEFLECT)	"
Q	"	SUPPLY		15x8"	REGISTER	FLUSH MTD (DBL DEFLECT)	"
R	"	SUPPLY		15x8"	REGISTER	FLUSH MTD (DBL DEFLECT)	"

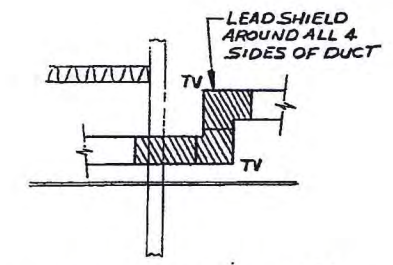


TYP. FLEX. DUCT CONNECTION

DETAIL 1  
NO SCALE



SECTION A



LEAD SHIELDING DET. 2  
NO SCALE  
TYP FOR (3)

**LEGEND**

B.F.D. — BUTTERFLY DAMPER  
S.D. — SPLITTER DAMPER

8411 9 AUG '84  
FZ 7R M-1

RALPH J. MELONE, AIA

MARTIN / ROGERS / ASSOCIATES  
CONSULTING ENGINEERS  
26 NORTH RIVER STREET  
WILKES-BARRE, PA 18702 (717) 838-1000

MEDICENTER INC.

ALL DIMENSIONS AND EXISTING CONDITIONS SHALL BE CHECKED AND VERIFIED BY THE CONTRACTOR AT THE SITE



RALPH J. MELONE, A.I.A.

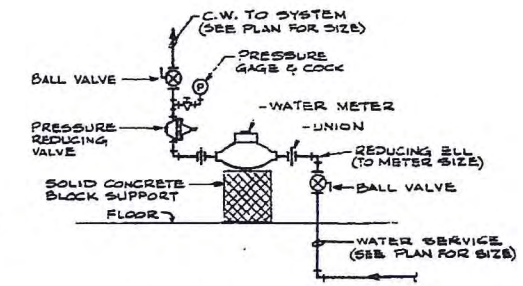
MARTIN / ROGERS / ASSOCIATES  
CONSULTING ENGINEERS  
26 NORTH RIVER STREET  
WILKES-BARRIE, PA 18702 (717) 860-1000

ALL DIMENSIONS AND EXISTING  
CONDITIONS SHALL BE CHECKED  
AND VERIFIED BY THE CONTRACTOR  
AT THE SITE

MEDICENTER INC.

**LEGEND**

- DOMESTIC COLD WATER
- DOMESTIC HOT WATER
- HOT WATER RECIRCULATION
- SAN SANITARY SEWER
- V SANITARY VENT PIPING
- RWC RAIN WATER CONDUCTOR
- STORM STORM WATER PIPING
- C.O. CLEAN OUT
- F.D. FLOOR DRAIN
- BALL VALVE
- GAS COCK



FLOOR DRAIN SCHEDULE						
TAG	MODEL	PIPE SIZE	STRAINER TYPE	STRAINER SIZE	REMARKS	
FD-1	2N-418	3"	B	5"	ZURN 2-1000 DEEP SEAL TRAP	
FD-2	7750F	3"	B	5"	GSR FUSEAL POLYPROPYLENE WITH DEEP SEAL TRAP & FUNNEL	

WATER HEATER SCHEDULE						
HEATER	MFR.	MODEL No.	STORAGE	RECOVERY	ELEMENTS	ELECTRICAL DATA
WH-1	STATE	55X-52-1RT1	52 GAL	25 GPH @ 70°RSE	1 S 3500W	240 V, 1φ

**PLUMBING SPECIFICATIONS:**

WATER SERVICE LINE: FLEXIBLE POLYETHYLENE TUBING, NSF LABELED, ASTM-D2737-81, 160 PSI RATING, COMPRESSION FITTINGS.

WATER PIPING - INTERIOR: TYPE 'L' COPPER TUBING WITH SWEAT FITTINGS.

WASTE, VENT PIPING: SCHEDULE 40 PVC WITH SOLVENT WELD FITTINGS. PROVIDE AS INDICATED IN SCHEDULE.

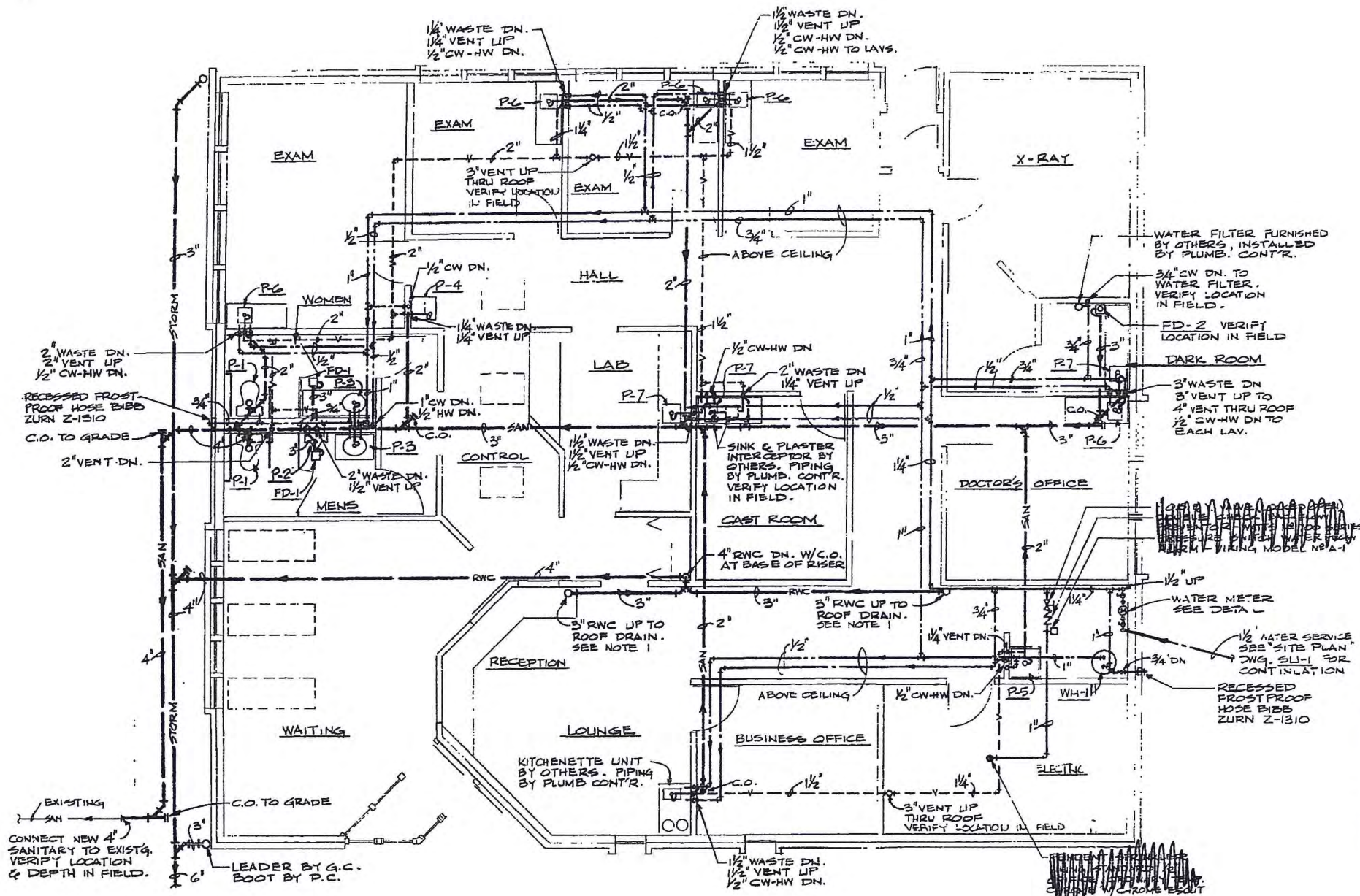
PLUMBING FIXTURES: BY MECHANICAL CONTRACTOR.

EXCAVATION & BACKFILL: 1/2" FIBERGLASS WITH ASJ JACKET, VAPOR SEAL ALL JOINTS.

PIPE INSULATION: PROVIDE AS INDICATED. POWER WIRING BY ELECTRICAL CONTRACTOR.

WATER HEATER: PROVIDE AS INDICATED. POWER WIRING BY ELECTRICAL CONTRACTOR.

VALVES: BALL TYPE WITH CONVENTIONAL PORTS, SWEAT TYPE NIBCO T588 OR EQUAL.



**FLOOR PLAN - PLUMBING**

SCALE: 1/4" = 1'-0"

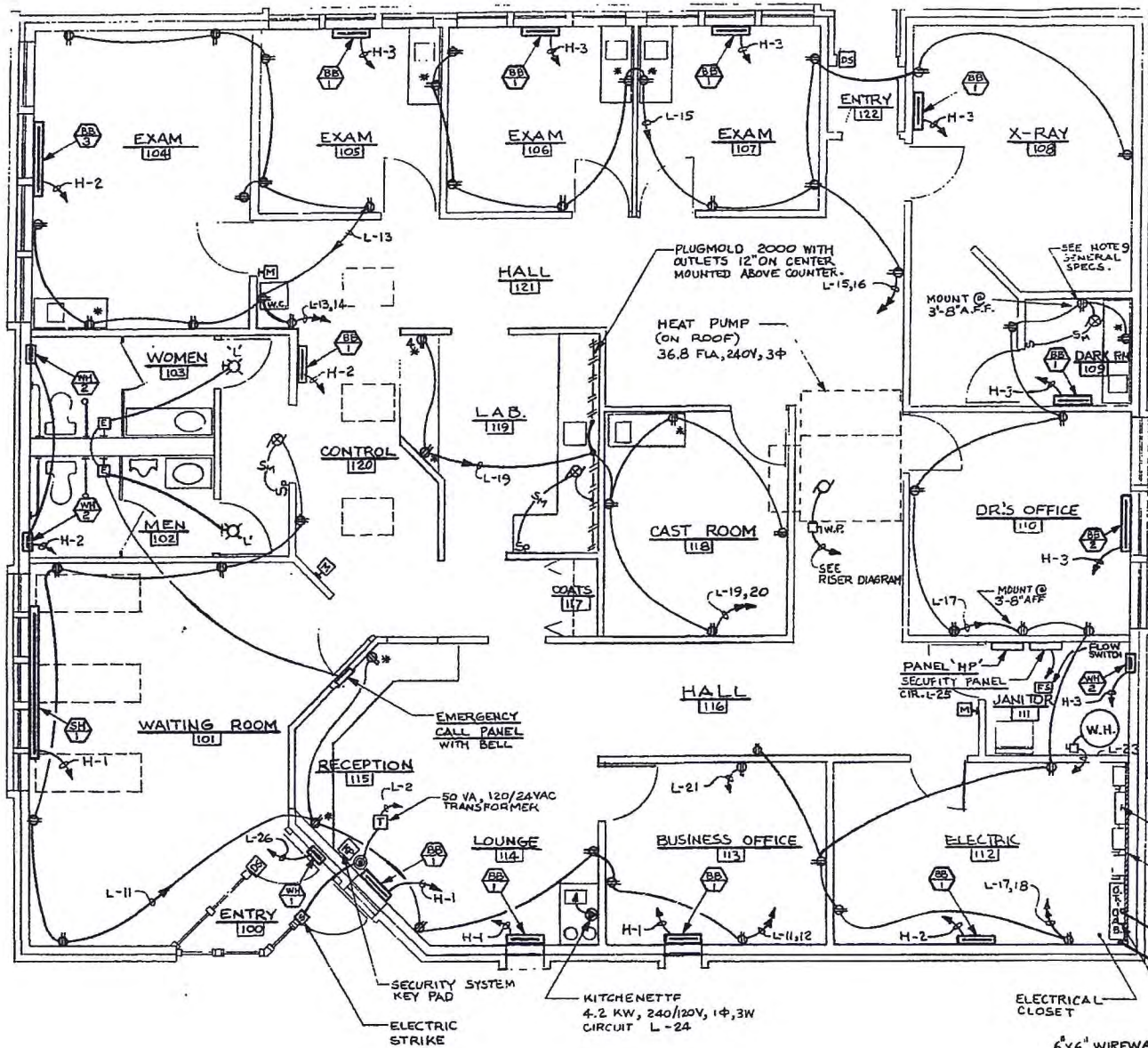
**NOTES:**  
1. JOIN PLASTIC RWC TO ROOF DRAIN STUB WITH NEOPRENE SLEEVE & S.S. CLAMPS.

**PLUMBING FIXTURE SCHEDULE**

TAG	FIXTURE	MANUFACTURER	MODEL No.	SIZE	MAT'L	C.W.	H.W.	SOIL/WASTE	VENT	REMARKS, ACCESSORIES, NOTES
P-1	WATER CLOSET	ELJER	091-1075	—	V.C.	1/2"	—	4"	2"	18" HIGH FOR HANDICAPPED
P-2	URINAL	ELJER	161-1090	—	V.C.	3/4"	—	2"	1 1/2"	SLOAN ROYAL FLUSH VALVE WITH 607 URINAL SUPPORT
P-3	LAVATORY	ELJER	051-3324	20" x 17"	V.C.	1/2"	1/2"	1 1/4"	1 1/4"	551-2300 FAUCET, 603-0550 DRAIN MOUNT FOR HANDICAPPED
P-4	WATER COOLER	ELKAY	EMF0-8	18" x 19"	S.S.	1/2"	—	1 1/4"	1 1/4"	MOUNT FOR HANDICAPPED
P-5	WATER DISPENSER	POWERS-PAT	MBE-2424	24" x 24"	M.S.	1/2"	1/2"	2"	1 1/4"	WITH HOSE & HOSE BRACKET
P-6	WATER BIODISTRIBUTOR	—	—	—	—	1/2"	1/2"	1 1/4"	1 1/4"	FAUCET BY OTHERS - TRAP, DRAIN & WATER PIPING BY PLUMBER CONTRACTOR
P-7	SINK BY OTHERS	—	—	—	—	1/2"	1/2"	1 1/4"	1 1/4"	FAUCET BY OTHERS - TRAP, DRAIN & WATER PIPING BY PLUMBER CONTRACTOR

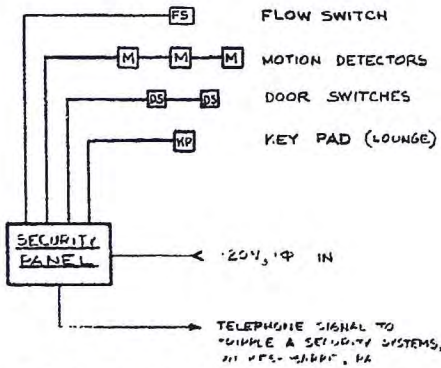


WYOMING AVENUE



**ELECTRICAL - FLOOR POWER PLAN**

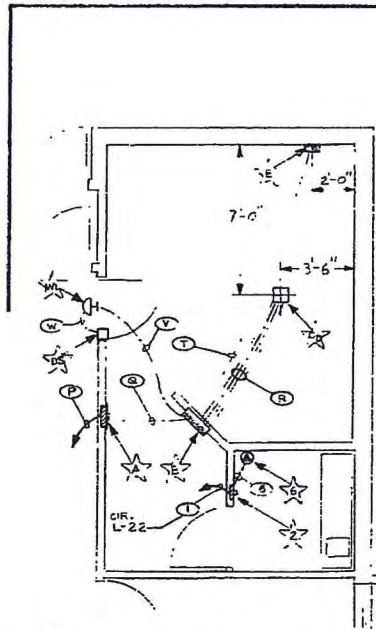
SCALE: 1/4" = 1' 0"



**SECURITY RISER DIAGRAM**

NO SCALE

TAG	MANUFACTURER	CATALOG NO.	WATTS	VOLTS	LENGTH	T'STAT	REMARKS
WH-1	BERKO	FFR-3024-A	3000	240		BUILT-IN	
WH-2	BERKO	SR-1527-P	562	240		BUILT-IN	
SH-1	BERKO	AS 811-2024-T	2000	240	8'-0"	BUILT-IN	
BB-1	SQ. D.	25 242-A	500	240	2'-4"	BUILT-IN	
BB-2	SQ. D.	25 243	750	240	3'-0"	BUILT-IN	
BB-3	SQ. D.	25 244	1000	240	4'-0"	BUILT-IN	



**X-RAY ROOM PLAN**

SCALE: 1/4" = 1'-0"

**CONDUIT RUNS AND WIRING**

- SUPPLIED BY ELECTRICAL CONTRACTOR
- A TO B ONE 1-1/2" C (2 - #4 PUR, 1 - #6N, 1 - #4 GRD)
  - B TO W ONE 1/2" C (4 - #14)
  - W TO DS 1/2" C (2 - #14)
  - B TO CD FOUR 1-1/2" CONDUITS (EMPTY)
  - B TO E ONE 1-1/2" CONDUIT (EMPTY)

**X-RAY EQUIPMENT COMPONENTS**

TAG	DESCRIPTION	LOCATION	NOTES
A	150 A-2P CIR. BRKR. W/ 225A COGN FRAME & RECESSED ENCLOSURE	5'-0" A.F.F. BOTTOM OF FLOOR OR EQUAL	SQ.D. CAT. NO. KAE 26150F OR EQUAL
B	JUNCTION BOX W/ COVER 15" W x 12" H x 4" D WITH FOUR CONNECTORS 1/2"	1'-6" A.F.F. BOTTOM OF BOX	PROVIDE TERMINAL STRIPS ON BACK OF BOX
C	JUNCTION BOX W/ COVER 2'-0" A.F.F. BOTTOM OF 3" SURFACE MOUNTED ENCLOSURE	2'-0" A.F.F. BOTTOM OF 3" SURFACE MOUNTED ENCLOSURE	WATER TIGHT
D	RECEPTACLE FOR PROCESSOR TO MATCH CORD PLUG 1 1/2"	LATCH SIDE OF DOOR	SQ.D. TYPE AW 12 B1 CLASS 9007 OR EQUAL
E	WARNING LIGHT		

**WIRING**

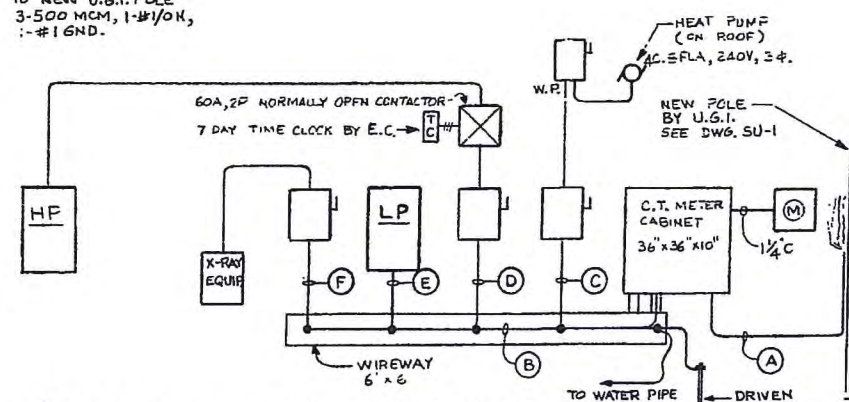
TAG	CONDUIT	WIRING	NOTES
P	ONE - 1/2"	2 - #20 PHASE 1 - #2 W. 1 - #2 GND.	
Q	ONE - 1/2"	2 - #4 PHASE 1 - #6 N. 1 - #4 GND.	LEAVE 6'-0" COILED WIRES AT BOX
R	FOUR - 1/2"	EMPTY	
S	ONE - 1/2"	EMPTY	
T	ONE - 1/2"	2 - #12 PHASE 1 - #12 N.	SERVICE TO 'ML 220' PROCESSOR
U	ONE - 1/2"	2 - #12 PHASE 1 - #12 N.	2-#12 RES AT 'ME OF NS' LATCH
V	ONE - 1/2"	4 - #14	
W	ONE - 1/2"	2 - #14	

**COMPONENTS**

- A. 240 VAC 225 AMP FRAME SHALL CONTAIN A SINGLE PHASE, TWO POLE 150 AMP CIRCUIT BREAKER WITH NEUTRAL AND GROUND ACCESSORIES, SQUARE D CAT. KAE26150F (OR EQUAL), 5' - 0" FROM FLOOR TO BOTTOM OF BOX.
- DS. DOORSWITCH SQUARE D, TYPE AW 12 B1 CLASS 9007 (OR EQUAL) FOR LATCH SIDE OF DOOR.
- WL. WARNING LIGHT CENTERED OVER ENTRANCE DOOR.

**JUNCTION BOXES**

- (ALL CONNECTORS EXCEPT WHERE NOTED ARE TO BE BOUND SERVICE OR NON-METALLIC CLAMPING CABLE TYPE. ALL BOXES TO BE SURFACE MOUNTED.)
- A. 18" WIDE X 12" HIGH X 6" DEEP. JUNCTION BOX WITH REMOVABLE BLANK COVER. PROVIDE SIX 1-1/2" CONNECTORS IN BOTTOM OF BOX. PROVIDE H. B. JONES (OR EQUAL) BARRIER TYPE TERMINAL STRIPS IN BACK OF BOX FOR ALL WIRES. LOCATE BOX 1'-6" FROM FLOOR UP TO BOTTOM OF BOX. (BOX TO BE 3" IN WALL AND 3" OUT OF WALL)
  - CD. 8" X 8" X 4" DEEP JUNCTION BOX WITH REMOVABLE COVER WITH FOUR 1-1/2" CONNECTORS. FLUSH WITH FINISHED FLOOR, AND WATER TIGHT.
  - E. 8" X 8" X 4" DEEP JUNCTION BOX WITH REMOVABLE COVER WITH ONE 1-1/2" CONNECTOR. MOUNT AT 2' - 6" FROM FLOOR UP TO BOTTOM OF BOX.



- (A) 3 - 500 MCM (PHASES), 1 - #10(N), 1 - #1(GND) IN 3/2" SCH. 40 PVC CONDUIT.
- (B) 3 - 350 MCM (PHASES), 1 - #10(N), 1 - #2(GND)
- (C) 3 - #4 (PHASES), 1 - #3(GND) IN 1/2" C. AND 100A DISC. SW. 2P. FUSED AT 75 A
- (D) 2 - #1 PHASES, 1 - #1(N) IN 1/2" C. AND 60A DISC. SW. 2P. FUSED AT 55 A
- (E) 2 - #4/1 PHASE, 1 - #4/0(N), 1 - #4(GND) IN 2 1/2" C.
- (F) 2 - #1/0 (PHASES), 1 - #2(N), 1 - #4(GND) IN 1/2" C. AND 200A DISC. SW. 2P, 3/4 FUSED AT 150A

**PARTIAL POWER RISER DIAGRAM**

NO SCALE

8411 AUG. 1984  
G.A.M.  
7 R.  
E-1 OF 2

RALPH J. MELONE, A.I.A.

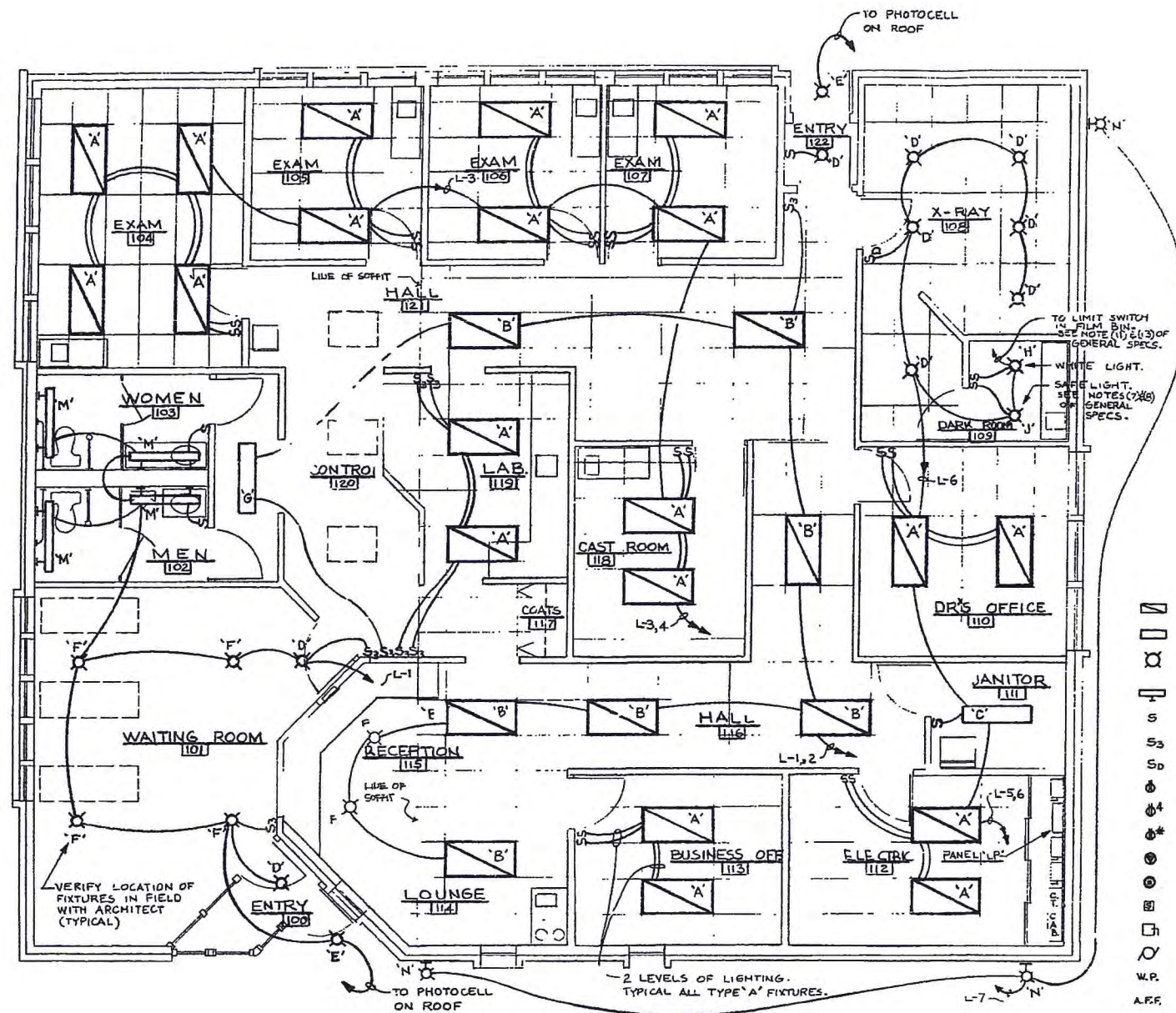
MARTIN / ROGERS / ASSOCIATES  
CONSULTING ENGINEERS  
25 NORTH RIVER STREET  
WILKES-BARRIE, PA. 19702 (717) 868-1000

MEDICENTER INC.

ALL DIMENSIONS AND EXISTING CONDITIONS SHALL BE CHECKED AND VERIFIED BY THE CONTRACTOR AT THE SITE



WYOMING AVENUE



**ELECTRICAL - FLOOR LIGHTING PLAN**

SCALE: 1/4" = 1'-0"

LIGHTING FIXTURE SCHEDULE					
TAG	MANUFACTURER & CATALOG No.	WATTS/VOLTS	LAMP DATA	MOUNTING	REMARKS
A	SIM-KAR TY 244 - 340	105 120	3-F35	RECESSED	ACRYLIC LENS 2'x4' TROFFER
B	SIM-KAR TY 244 - 240	70 120	2-F35	RECESSED	ACRYLIC LENS 2'x4' TROFFER
C	SIM-KAR CHK 248	70 120	2-F35	SURFACE	CHANNEL
D	HALO H 4541-S	150 120	1-150 A21	RECESSED	BLACK SAFFLE
E	HALO H 4540	100 120	1-100 A19	RECESSED	DAMP LABEL
F	HALO H 1319	150 120	1-150 R40	STEM @ 7'-9"	3'x6' WHITE PENDANT
G	SIM-KAR SY 925-240	70 120	2-F35	SURFACE	
H	HALO H2-5 / No. 23	100 120	1-100 A19	RECESSED	
J			120	BY OTHERS	BY X-RAY SUPPLIER
K	NOT USED				
L	SHAFER 2904-9003	7 24	1-TW	WALL @ 7'-6"	EMERG. CALL LIGHT
M	SIM-KAR FCU 140	40 120	1-F40	WALL @ 7'-0"	
N	VERHE 523-701X-PC	70 120	1-70 HPS	WALL @ 10'-3"	BUILT-IN PHOTOCELL

**LEGEND**

- FLUORESCENT FIXTURE, RECESSED
- FLUORESCENT FIXTURE SURFACED MOUNTED
- INCANDESCENT FIXTURE, RECESSED OR SURFACE
- WALL MOUNTED FIXTURE
- SINGLE POLE SWITCH
- THREE WAY SWITCH
- DIMMER SWITCH
- DUPLEX CONVENIENCE RECEPTACLE
- DOUBLE DUPLEX CONV. RECEPTACLE
- SPECIALTY MOUNTED RECEPTACLE 6" ABOVE COUNTER
- SPECIAL PURPOSE RECEPTACLE
- PUSH BUTTON
- ELECTRIC DOOR STRIKE
- DISCONNECT SWITCH
- MOTOR
- WEATHER PROOF
- ABOVE FINISHED FLOOR
- BRANCH CIRCUIT
- HOME RUN
- CONTACTOR
- TIME CLOCK
- EMERGENCY CALL PULL SWITCH
- DOOR SWITCH, MAGNETIC
- MOTION DETECTOR
- KEY PAD - SECURITY SYSTEM
- MANUAL MOTOR STARTING SWITCH WITH OVERLOAD PROTECTION, EXHAUST FAN

**ELECTRICAL SPECIFICATIONS**

- ELECTRICAL WORK CONSISTS OF THE FOLLOWING:
  - FURNISHING AND INSTALLING UNDERGROUND SERVICE, METERING, FEEDER, PANELBOARD, BRANCH CIRCUIT WIRING, WALL SWITCHES, RECEPTACLES, OUTLET BOXES, PLATES, CONDUITS AND WIRE.
  - FURNISHING AND INSTALLING COMPLETE ELECTRIC HEATING SYSTEM INCLUDING CONTROLS.
  - FURNISHING AND INSTALLING LIGHTING FIXTURES INCLUDING LAMPS.
- CONTRACTOR SHALL PROVIDE AND INSTALL SPECIFICATION GRADE OUTLETS AND SWITCHES. ALL COVERS TO BE STAINLESS STEEL.
- ALL WIRING SHALL BE COPPER CONDUCTORS WITH TYPE THW, THHN, OR THWN INSULATION OR TYPE NM AS ALLOWED BY CODE.
- ALL WIRING SHALL BE INSTALLED IN ELECTRIC METALLIC TUBING (E.M.T.) AND SHALL COMPLY WITH THE NATIONAL ELECTRIC CODE.
- ALL WORK SHALL COMPLY WITH ALL LOCAL CODES, THE RULES AND REGULATIONS OF THE PENNSYLVANIA DEPARTMENT OF LABOR AND INDUSTRY.
- ALL PERMITS AND FEES SHALL BE PAID FOR BY THE ELECTRICAL CONTRACTOR.
- ALL WORK SHALL BE INSPECTED AND APPROVED BY THE MIDDLE DEPARTMENT ELECTRICAL INSPECTION AGENCY.
- ALL PANELBOARDS SHALL BE THE NON-BOLTED TYPE AND SHALL BE BY SQUARE D, GENERAL ELECTRIC, OR WESTINGHOUSE.
- PROVIDE ALL TEMPORARY WIRING AND POWER NECESSARY FOR CONSTRUCTION.
- ALL DISCONNECT SWITCHES SHALL BE FUSED. ELECTRICAL CONTRACTOR TO SUPPLY ONE SET OF SPARE FUSES.
- VERIFY LOCATIONS OF ALL LIGHTING FIXTURES WITH THE OWNER PRIOR TO ROUGHING-IN.
- ALL POWER OUTAGES SHALL BE REARRANGED WITH LOCAL POWER COMPANY AND SHALL BE AT THE OWNER'S CONVENIENCE.
- ALL WORKMANSHIP AND EQUIPMENT SHALL BE GUARANTEED FOR ONE YEAR FROM TIME OF ACCEPTANCE BY THE OWNER.
- ALL BRANCH CIRCUITS SHALL HAVE AN INSULATED GROUND CONDUCTOR AS REQUIRED BY THE NATIONAL ELECTRIC CODE.
- ALL OUTLET BOXES SHALL BE METAL AND SHALL BE GROUNDING.
- THE ELECTRICAL CONTRACTOR SHALL PAY ALL UTILITY COMPANY COSTS FOR THE UNDERGROUND SERVICE.
- VERIFY X-RAY EQUIPMENT LOCATIONS PRIOR TO ROUGHING-IN.
- EMERGENCY CALL SYSTEM SHALL BE BY SIMPLEX TIME RECORDER CO. AND SHALL USE TYPE 810-84 CALL SWITCH WITH A 2 ZONE ASSOCIATOR WITH BUILT-IN BELL.
- ALL WIRING IN THE RETURN AIR FLENUM SHALL BE APPROVED FOR THE USE IN PLenums.
- SECURITY SYSTEM SHALL USE THE FOLLOWING EQUIPMENT:
  - CONTROL PANEL: ADENCO - 1023-12
  - DOOR SWITCHES: SENSAL - 1077
  - MOTION DETECTORS: ARROWHEAD - 8610-11
  - DIGITAL MICROPROCESSOR: NAPCO DD-485
  - SIGNAL SHALL BE SENT TO TRIPLE A ALARM CO., WILKES-BARRE, OR APPROVED EQUAL.

**X-RAY**

**GENERAL SPECIFICATIONS**

- ELECTRICAL SERVICE TO 1200 PROCESSOR MAINSWITCH. 120/208 VOLT, 3 WIRE, OR 120/240 VOLT, 3 WIRE, 50/60 HERTZ SINGLE PHASE 15 AMP. PROVIDE GREEN EQUIPMENT GROUND.
- MAINSWITCH FOR 1200 PROCESSOR 240 VOLT, 20 AMP, 2 POLE WITH 20 AMP THERMOMAGNETIC CIRCUIT BREAKER. 3" - 0" FROM FLOOR TO BOTTOM OF BOX. PROVIDE 1/2" CONDUIT FROM MAINSWITCH TO PROCESSOR SERVICES LOCATION. END IN JUNCTION BOX CONTAINING RECEPTACLE MATCHING PROCESSOR COORD PLUG 14/351. RUN THREE #12 AWG WIRES CONTINUOUS FROM MAINSWITCH TO PROCESSOR THRU CONDUITS AT TIME OF INSTALLATION.
- 115 VAC RECEPTACLE AT CEILING FOR SAFELIGHT.
- WALL SWITCH FOR DARKROOM SAFELIGHT. LOCATE 4' - 0" FROM FLOOR TO CENTER OF SWITCH.
- 115 VAC ELECTRICAL FEED TO ILLUMINATOR IS SURFACE MOUNTED, CONDUIT IF FLUSH MOUNTED.
- 115 VAC DUPLEX RECEPTACLE ABOVE COUNTER TOP.
- FLUSH CEILING FIXTURE TO CONTAIN WHITE LIGHT. CONNECT IN SERIES WITH WALL SWITCH AND LIMIT SWITCH IN FILM BIN.
- LIMIT SWITCH INCLUDED WITH FILM BIN. CONNECT IN SERIES TO WHITE LIGHT IN DARKROOM. SEE PD SHEET FOR LOCATION OF SWITCH IN FILM BIN.
- WALL SWITCH FOR DARKROOM WHITE LIGHT. LOCATE 5' - 6" FROM FLOOR TO CENTER OF SWITCH.

**NOTES**

- STRANDED WIRING TO BE USED THROUGHOUT, COLOR CODE AND IDENTIFY BOTH ENDS OF ALL WIRES.
- DIMENSIONS SHOWN ARE FROM FINISHED WALLS.
- CONDUIT RUNS ARE SHOWN SCHEMATICALLY, BUT THE CONDITIONS WILL DETERMINE THE ACTUAL CONDUIT RUNS.
- LINE VOLTAGE AT MAINSWITCH MUST NOT EXCEED 2-1/2% VARIATION AT MAXIMUM LOAD, 6' - 0" WIRE TAILS AT ALL POINTS UNLESS OTHERWISE SPECIFIED.
- WHERE JUNCTION BOXES DISPLACE CONCRETE, THE BOXES SHALL BE BACKED WITH LEAD SHEET AS SPECIFIED BY THE GENERAL CONTRACTOR. WHERE JUNCTION BOXES PIERCE LEAD LINING THE LEAD SHALL BE REPLACED IN AND AROUND THE BOXES.
- PAINT ALL ELECTRICAL BOXES TO MATCH SURROUNDING WALLS.

PANEL 'LP'			
225 A. MAIN BRKR. 120/240 V. 1 φ 3W			
No.	BRKR.	USE	WIRING
1-6	20A - 1P	LIGHTING	2#12 GND - NM
7	20A - 1P	LIGHTING OUTDOOR	2#12 GND - NM
8-10	20A - 1P	SPARES	
11-21	20A - 1P	RECEPTACLES	2#12 GND - NM
22	25A - 2P	PROCESSOR	3#12 GND - NM
23	30A - 2P	WATER HEATER	2#6 GND - NM
24	25A - 2P	KITCHENETTE	3#10 GND - C.
25	20A - 1P	SECURITY PANEL	2#12 GND - NM
26	20A - 2P	WALL HEATER WH-1 (ENTRY)	2#12 GND - NM
27-30	20A - 1P	SPARES	
31-38	- 1P	SPACES	

PANEL 'HP'			
60 A. MAIN BRKR. 120/240 V. 1 φ 3W			
No.	BRKR.	USE	WIRING
1	20A - 2P	BASE BOARD & SILL MTRS	2#12 GND - NM
2	20A - 2P	BASEBOARD MTRS	2#12 GND - NM
3	20A - 2P	BASEBOARD & WALL MTRS	2#12 GND - NM
4	20A - 2P	SPARE	
5-B	- 1P	SPACES	

B-411 9 AUG. 1984 G.A.M. 7R E-2 of 2

MARTIN ROGERS / ASSOCIATES  
 CONSULTING ENGINEERS  
 25 NORTH RIVER STREET  
 WILKES-BARRE, PA 18702 (717) 826-1000

**MEDICENTER INC.**

ALL DIMENSIONS AND EXISTING CONDITIONS SHALL BE CHECKED AND VERIFIED BY THE CONTRACTOR AT THE SITE