

**2037 STEFKO BLVD
BETHLEHEM, PA 18017**

**FOR
SALE**



\$525,000

**2,016 SF FREESTANDING
MEDICAL/PROFESSIONAL OFFICE**

- Located on Heavily Traveled Stefko Blvd
- Zoned: Medium Density Residential
- Dedicated Private Parking for 10 Vehicles

Opportunity
includes
Successful
Optometry
Business

Well-situated freestanding professional/medical property located on heavily traveled Stefko Blvd. in Bethlehem, PA.

Property is currently operating as an optician and family law firm. Great opportunity for virtually any medical or professional use. Sale price includes the contents of the space and successful optometry business.



kw
KELLERWILLIAMS
REAL ESTATE
Each office is individually owned and operated

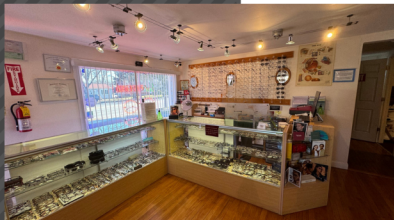
James Balliet
President
O 610-435-1800
C 610-972-6808

 **James Balliet**
PROPERTY GROUP

James@JBPropertyGroup.com BDiaz@JBPropertyGroup.com
www.JBPropertyGroup.com

Benjamin Diaz
Realtor
O 610-435-1800
C 484-705-9655

FANTASTIC LEHIGH VALLEY LOCATION



kw
KELLERWILLIAMS.
REAL ESTATE
Each office is individually owned and operated

James Balliet
President
O 610-435-1800
C 610-972-6808

James Balliet
PROPERTY GROUP

Benjamin Diaz
Realtor
O 610-435-1800
C 484-705-9655

James@JBPropertyGroup.com BDiaz@JBPropertyGroup.com

www.JBPropertyGroup.com